

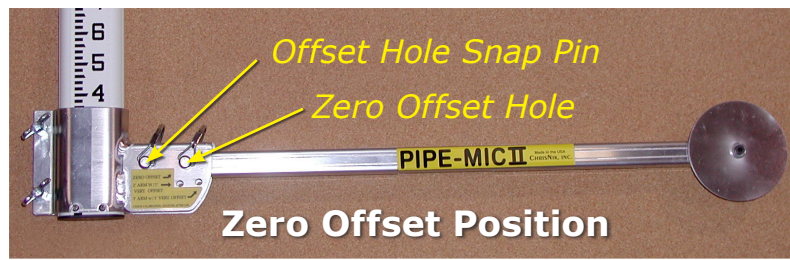
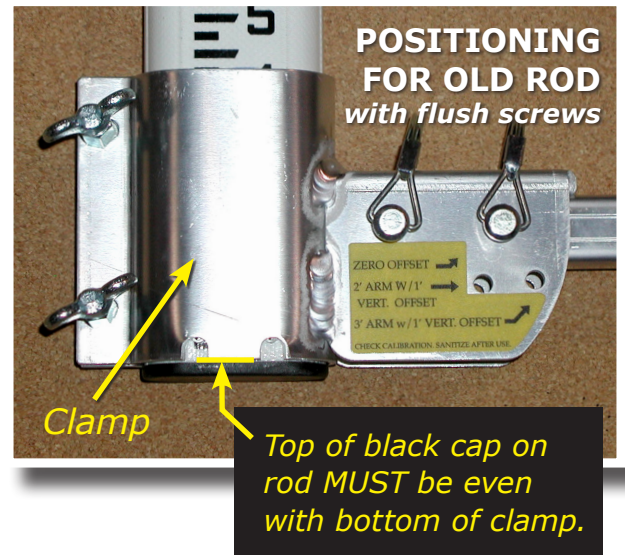
PIPE-MIC II®

Instruction Sheet

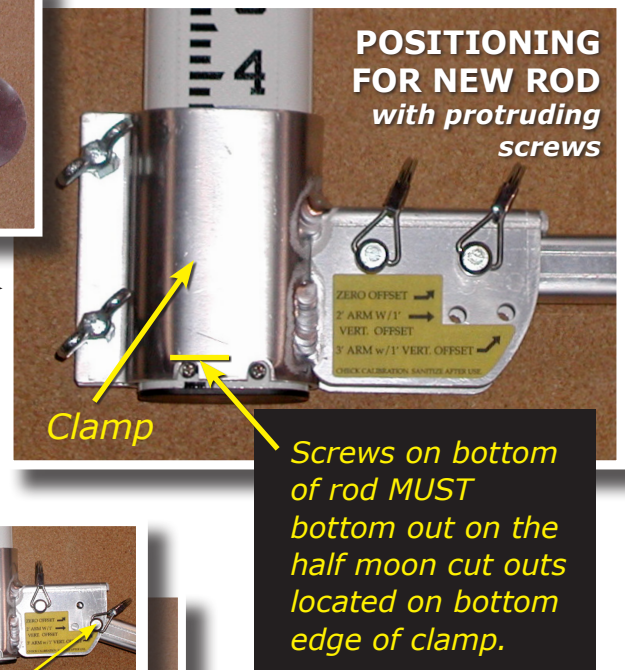
Part #1702PM—with two foot arm
(Optional three foot arm sold separately—Part #1736ARM)

The Pipe-Mic II® is ChrisNik's newest calibration device to easily and accurately measure pipe inverts and pipe sizes fast, making your life easier.

For initial setup loosen the thumb screws on the side of your Pipe-Mic II® and insert either a Seco SVR rod or the preferred ChrisNik Pipe-Mic II® Rod (part # 172510)—that has 10th's on both sides of the rod—into the clamp on the body of the Pipe-Mic II. For an old style rod with flush screws, insert until the black foot on the bottom of the rod meets the bottom of the clamp (shown, top right). For a new style rod with protruding screws, insert until



screws on bottom of rod sit firmly on the half moon cut outs, located on bottom edge of clamp. There will be a gap between foot and clamp. This is an important step, as this is part of the calibration of the device. Tighten the thumb screws until they are snug, make sure not to over-tighten the screws as to avoid damage to the rod and to the threads on the bolts.



MEASURING THE INVERT

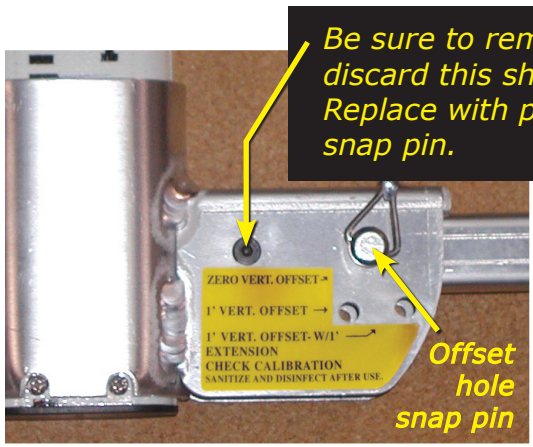
To take a measurement of the invert of the pipe where you have limited clearance under the rod, remove the snap pin and set the arm to "3' ARM w/1' VERT. OFFSET" hole. **Remember to add the extra foot to your measurement.**



(More instructions on reverse side.)

Swapping Two Foot Arm for the Three Foot Arm

NEW THREE FOOT ARM WITH WHEEL!



Be sure to remove and discard this shoulder bolt. Replace with provided snap pin.

Offset hole snap pin

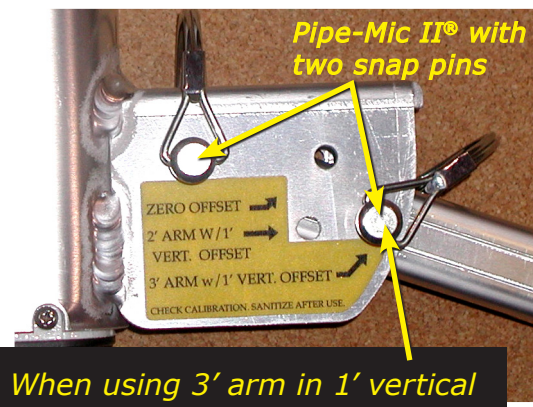
We also have a three foot arm, (Part #1736ARM) SOLD SEPARATELY,

for those larger diameter manholes that our two foot arm cannot reach. To use, just swap the two foot arm with the three foot arm by removing the shoulder bolt and the offset hole snap pin on the body of the Pipe-Mic II®. Then remove the two foot arm and replace it with the three foot arm. Place the new replacement snap pin, provided, in place of the bolt and place the offset hole snap pin in either the "ZERO VERT. OFFSET" hole or in the "3' ARM w/1' VERT. OFFSET" hole and your three foot arm is ready for use.

If your Pipe-Mic II® already has two snap pins (instead of a shoulder bolt and a snap pin), just pull both pins and replace the two foot arm with the three foot arm.

MEASURING A PIPE

If you want to measure the diameter of a pipe coming into a manhole, simply set your arm to any position that gives you the best access to the pipe. Place the wheel of the Pipe-Mic II on invert of pipe. Then lift the rod straight up and take your measurement, once the wheel makes contact with the top of the pipe. Add 0.33 to your measurement and this will be your pipe size. The wheel on your Pipe-Mic II is 0.33 or 4" diameter. (Keep in mind, flex in your rod can cause variations in measurement.)



Pipe-Mic II® with two snap pins

When using 3' arm in 1' vertical offset, be sure to use this hole.

Always remember to sanitize and clean your Pipe-Mic II after every use. It is important to make sure that you clean the wheel and main body thoroughly so as to avoid cross contamination. From our facility, we put anti-seize on the thumb screws to ensure smooth operation and to prevent binding of the screws. As your Pipe-Mic II is used, we strongly recommend that you either apply more anti-seize, grease or at the very least spray some WD-40 on the screw itself to prevent corrosion. This is important to extend the life of your Pipe-Mic II and to ensure smooth operation.

Always check the calibration of your rod!! Bent or worn out rods can cause inaccurate measurements. Worn out rods should be replaced to ensure the highest amount of precision and accuracy in your measurements. Optional parts and accessories sold separately. See ChrisNik.com or your preferred ChrisNik dealer for parts and pricing.

- Part #1702PM2—Pipe-Mic II®
- Part #1736ARM—3 Foot Arm with Wheel
- Part #172510—Pipe-Mic II® Double-Sided Rod 25' - 10ths

Examples for sizing pipe

Pipe Size	Movement
4" Pipe	= 0.00
6" Pipe	= 0.17
8" Pipe	= 0.33
10" Pipe	= 0.50
12" Pipe	= 0.67

Remember your Pipe-Mic II® wheel diameter is 0.33 or 4"