



L-Bar Mini Prism

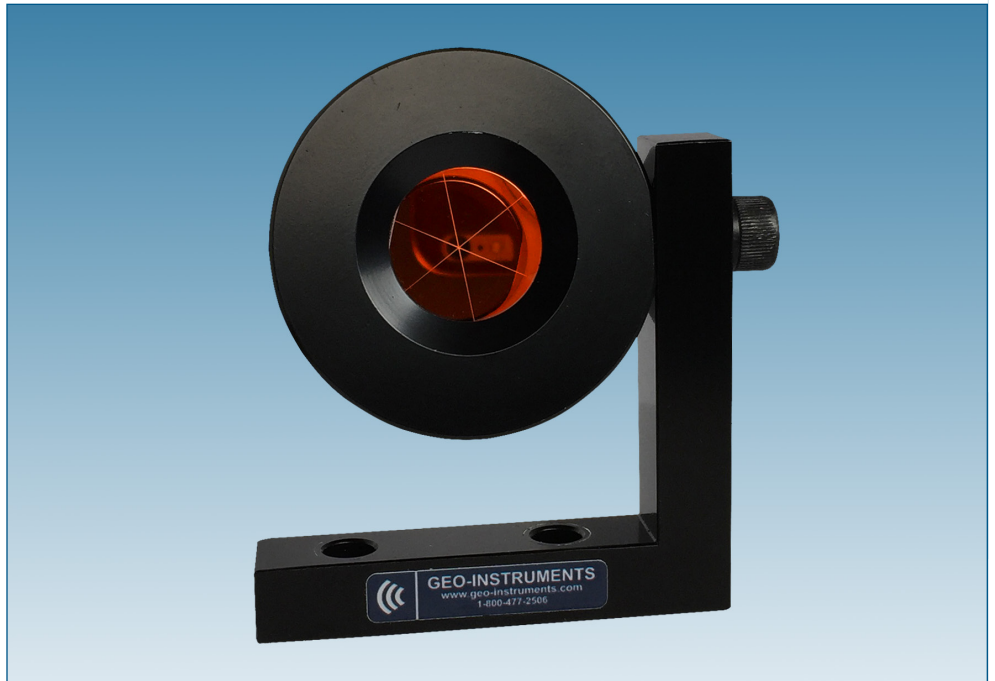
Applications

The L-Bar Mini Prism is a compact and versatile optical target used with automated total stations (AMTS) to monitor displacements and deformations of structures.

Suitable for a wide range of applications, the L-Bar Mini Prism can be installed on tunnel walls, building facades, foundation slabs, retaining walls, and bridge decks.

Installation

1. Choose a location that provides a clear line of sight to the AMTS.
2. Determine the best orientation for the L-bar bracket, install the anchors, and mount the bracket.
3. Attach the prism to the bracket, rotate it to face the AMTS, and tighten the mounting screw.



The L-Bar Mini Prism is suitable for a wide range of applications

Advantages

- **High Performance:** Coated optics for better performance.
- **Durable:** Prism is waterproof and dustproof, suitable for any environment.
- **Low Visual Impact:** The compact prisms are almost unnoticeable from street level.
- **Easy Installation:** The compact bracket can be installed in any orientation and fits nearly any location.
- **Cost Effective:** Economical prism provides low cost per monitored point.

Specifications

L-Bar Bracket: 3 inch arms, black anodized aluminum. Two 5/16 inch (8 mm) holes for mounting screws.

Prism: 25 mm optical glass with anti-reflection and copper coatings.

Prism Offset for Leica: +8.92 mm.

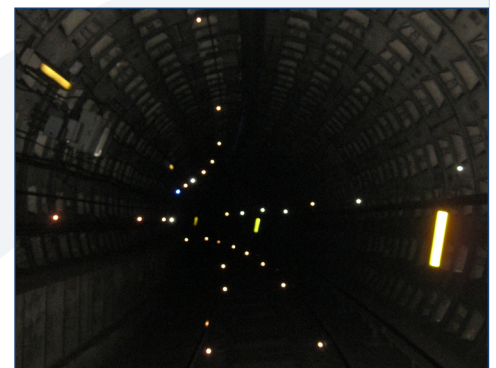
Prism Offset for Trimble & other: -25.5 mm.

Part Numbers

- L-Bar Mini Prism TSP110
- Magnetic Mounting Kit..... TSN210



Building Facade



Tunnel



SOE (Soldier Pile)



Bridge Pier.